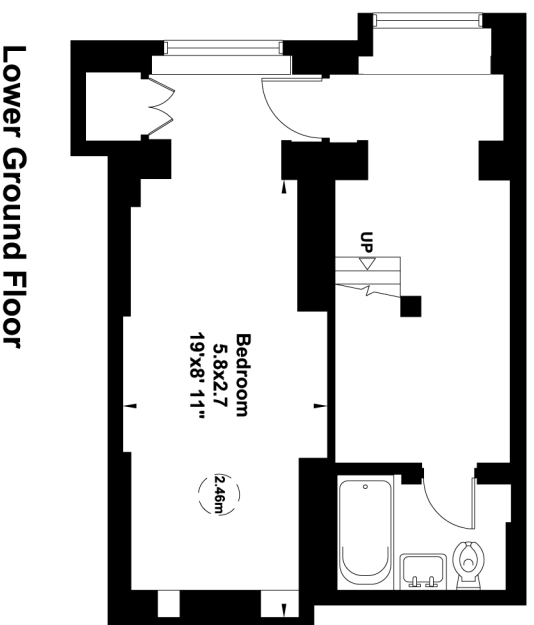


Lyall Street, SW1

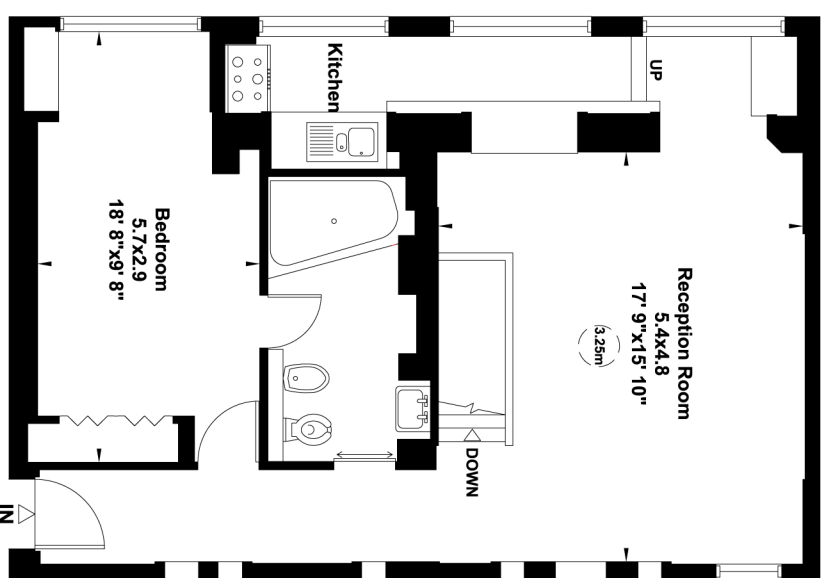
Gross internal area (approx.)
109 Sq m (1178 Sq ft)

For identification only, Not to Scale

capital 020 8671 7722



Lower Ground Floor



Ground Floor

Not to scale, for guidance only and must not be relied upon as a statement of fact. All measurements and areas are approximate only (and have been prepared in accordance with the current edition of the RICS Code of Measuring Practice).